



JUST ONE CLICK COULD COST YOU

Phishing is often the delivery mechanism for cybercriminals to unleash other devastating cyberattacks. Like ransomware, for example.

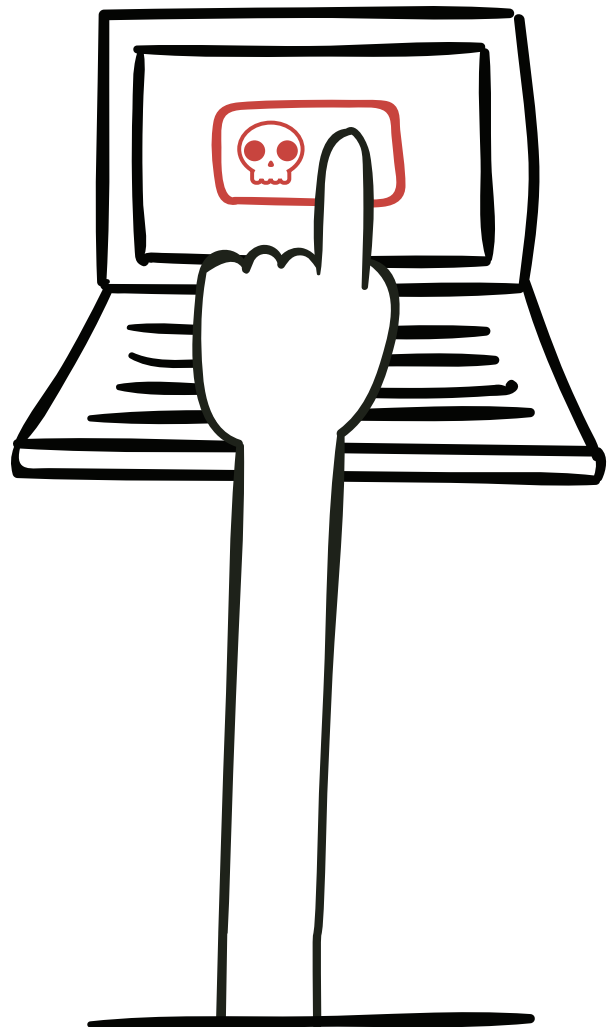
Ransomware is a type of malicious software that locks victims out of their devices or blocks access to files until a sum of money or ransom is paid.

Ransomware attacks cause downtime, data loss and can even result in intellectual property theft.

ENSURE YOU PROTECT YOURSELF AND YOUR ORGANISATION AGAINST MALWARE BY REMEMBERING TO:

- Verify links and attachments before clicking on them
- Back up your information to an approved system
- Critique any unexpected request
- Report any suspicious messages immediately

JUST ONE CLICK ON A BAD LINK IS ALL IT TAKES.



WATCH CRIMINAL MINDS - RANSOMWARE TO SEE THE DAMAGE RANSOMWARE CAN CAUSE TO AN ORGANISATION IF SENSITIVE DATA FALLS INTO THE WRONG HANDS.



Popcorn
Training